



GAT MONTHLY MEMBERSHIP PROGRESS REPORT

Results as of: 3/31/2021

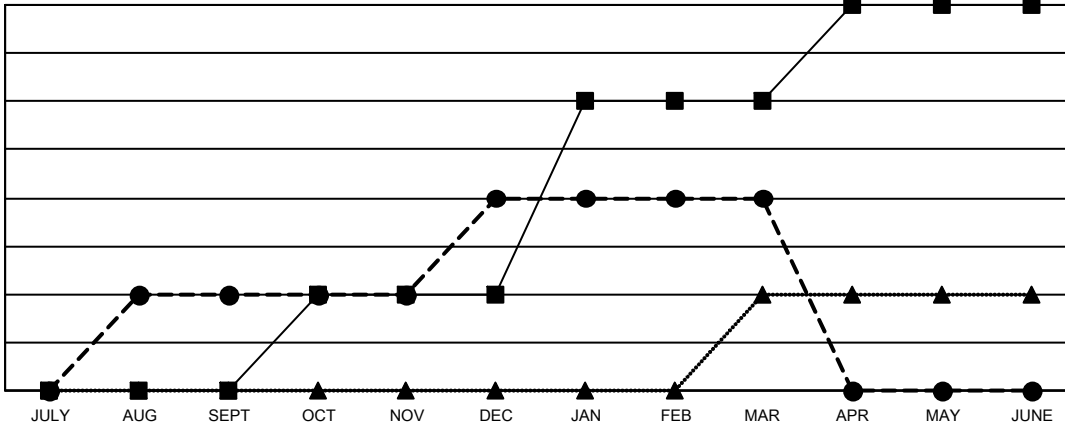
Multiple District 34

LOCATION: ALABAMA

| Clubs | | | |
|-----------------------|---------------|-----------|---------------|
| RESULTS FOR 2020-2021 | | | |
| QUARTER | NEW CLUB GOAL | NEW CLUBS | DROPPED CLUBS |
| JULY/AUG/SEPT | 0 | 1 | 1 |
| OCT/NOV/DEC | 1 | 1 | 3 |
| JAN/FEB/MAR | 2 | 0 | 7 |
| APR/MAY/JUNE | 1 | 0 | 0 |

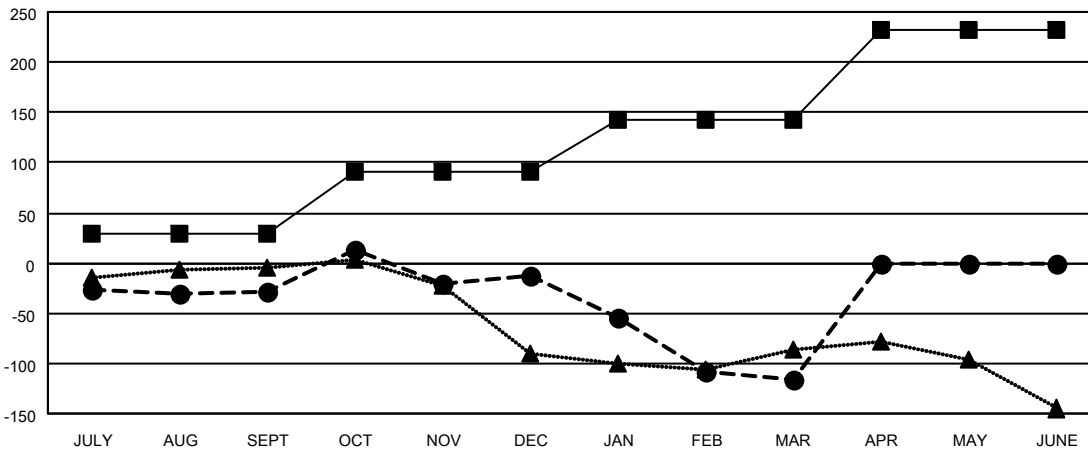
| Members | | | |
|-----------------------|------------------------|----------------------|--|
| RESULTS FOR 2020-2021 | | | |
| QUARTER | MEMBER GROWTH NET GOAL | MEMBER GROWTH ACTUAL | DROPPED MEMBERS ACTUAL (including transfers) |
| JULY/AUG/SEPT | 30 | 70 | 91 |
| OCT/NOV/DEC | 60 | 144 | 122 |
| JAN/FEB/MAR | 52 | 64 | 143 |
| APR/MAY/JUNE | 90 | 0 | 0 |

GOALS AND ACTUAL NEW CLUBS CUMULATIVE



- - CURRENT YEAR GOALS FOR NEW CLUBS
- - CURRENT YEAR ACTUAL NEW CLUBS
- ▲ - LAST YEAR ACTUAL NEW CLUBS

GOALS AND ACTUAL MEMBERS CUMULATIVE



- - MEMBER GROWTH NET GOAL
- - MEMBER GROWTH ACTUAL
- ▲ - LAST YEAR MEMBERSHIP ACTUAL

| | |
|------------------------|------------|
| DROPPED CLUBS: 11 | |
| <u>DROPPED MEMBERS</u> | |
| DECEASED | 46 |
| CLUB CANCELLED | 53 |
| OTHER | 257 |
| TOTAL | 356 |

| |
|---|
| 49 CLUBS OF 126 ADDED 1 OR MORE NEW MEMBERS |
| CLICK HERE FOR CUMULATIVE MEMBERSHIP DATA |

| | |
|---------------------------------|----------------|
| <u>GENDER DISTRIBUTION</u> | |
| MALE | 1,902 (67.86%) |
| FEMALE | 901 (32.14%) |
| TOTAL FAMILY UNIT MEMBERS | 519 |
| FAMILY MEMBERS PAYING HALF DUES | 266 |